

The Immortal Yahweh

(1 Tim 1:17, 6:15, 6; Jn. 4:23, Jude 25)

Yahweh Yang Kekal

Worshipfully ♩ = 102

H.M.L. Chang

F

C/E

B^b/D



Yah — weh. Yah — weh. The One and
 1. Yah — weh, Yah — weh, Sa — tu — sa —
 2. Yah — weh, Yah — weh, Al — lah E —

C



On — ly Sove — reign. True God.
 tu — nya Pe — ngua — sa.
 sa — ya — ng Be — nar.

A

Dm

C

F



1. You are the Source of light. No one can e — ver see You.
 2. You are the King of kings. You are the LORD of lords.
 3. We come to wor — ship You, in spi — rit and in truth.
 1. Sum — ber te — rang ca — ha — ya. Tak ter — li — hat ma — nu — sia.
 2. Ra — ja se — ga — la ra — ja. Tu — han se — ga — la tu — han.
 3. Kau — lah yang ka — mi sem — bah da — lam roh dan keb' — na — ran.

A

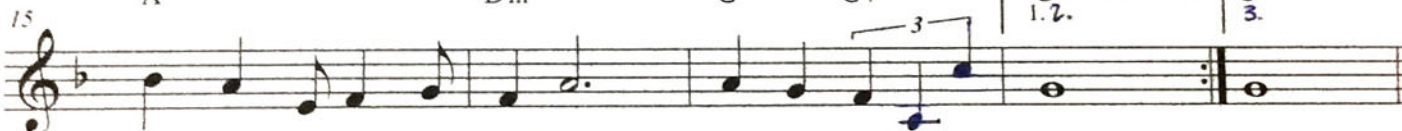
Dm

G

G7

E 1.2.

C 3.



You're the e — ter — nal Ru — ter. The im — mor — tal Yah — weh.
 You're The e — ter — nal Po — wer. The im — mor — tal Yah — weh.
 You're the e — ter — nal Spi — rit. The im — mor — tal Yah — weh.
 Kau Pe — ngua — sa yang ke — kal. Yah — weh yang a — ba — di.
 Kau — lah Kua — sa yang ke — kal. Yah — weh yang a — ba — di.
 Roh Al — lah — yang ke — kal. Yah — weh yang a — ba — di.

Brightly ♩ = 106

F

C



4. Ho — nor, bless — ing and au — tho — ri — ty,
 5. Ho — nor, bless — ing and au — tho — ri — ty,
 Hor — mat Kua — sa Pu — ji — pu — ji — an.
 Hor — mat Kua — sa Pu — ji — pu — ji — an.

C7

F



migh — ty po — wer be to Yah — weh.
 migh — ty po — wer be to Yah — weh.
 Ke — mu — lia — an ba — gi Yah — weh.
 Ke — mu — lia — an ba — gi Yah — weh.

The Immortal Yahweh

B \flat **F/A**

Glo - ry, wor - ship, heav - ly ma - jes - ty,
Hal - le - lu - jah, hal - le - lu - jah,

Pu - ji sem - bah ke - be - sa - ran - Nya
Ha - le - lu - ya Ha - le - lu - ya

F **C7** **F**

al - ways, e - ver be to Yah - weh.
hal - le - lu - jah

Pu - ji Yah - weh s'la - ma - la - ma - nya.
Ha - le - lu - ya

Gm \flat **C** **F**

The im - mor - tal Yah - weh.
Yah - weh yang ke - kal.

Copyright belongs to HMYK CHANG